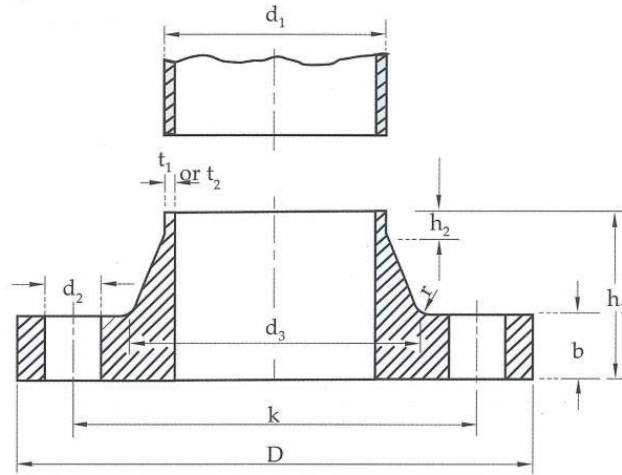


# ➤ MWA Standard for Neck Flanges (MWA : การประปานครหลวง)



## STEEL WELDING NECK FLANGE

Unit : mm.

ND.	Pipe OD. $d_1$	Flange			Bolting	Drilling			Neck				Class	
		D	b	$h_1$		No.	$d_2$	k	$d_3$	$h_2$	r	$t_1$		$t_2$
700	$711.2 \pm 1.6$	895	30	80	M 27	24	30	840	746	18	12	6	11.1	PN10
800	$812.8 \pm 1.6$	1015	32	90	M 30	24	33	950	848	18	12	7.9	12.7	PN10
900	$914.4 \pm 1.6$	1115	34	95	M 30	28	33	1050	948	20	12	7.9	12.7	PN10
1000	$1016 \pm 1.6$	1230	31	95	M 33	28	36	1160	1050	20	12	9.5	12.7	PN10
1200	$1219.2 \pm 1.6$	1455	38	115	M 36	32	39	1380	1256	25	12	11.1	15.9	PN10
1500	$1524 \pm 1.6$	1785	46	125	M 39	36	42	1700	1563	25	12	12.7	19.1	PN10
1600	$1625.6 \pm 1.6$	1915	46	130	M 45	40	48	1820	1666	25	12	14	19.1	PN10
1800	$1820 \pm 3.0$	2115	50	140	M 45	44	48	2020	1866	30	15	14	19.1	PN10
2000	$2020 \pm 3.0$	2325	54	150	M 45	48	48	2230	2070	30	15	14/15.9	19.1/25.4	PN10
2200	$2220 \pm 3.0$	2550	58	160	M 52	52	55	2440	2275	35	18	18/19.1	25.4	PN10
2400	$2420 \pm 3.0$	2760	62	170	M 52	56	55	2650	2478	35	18	25.4	-	PN10
2600	$2620 \pm 3.0$	2960	66	180	M 52	60	55	2850	2680	40	18	25.4	-	PN10
2800	$2820 \pm 3.0$	3180	70	190	M 52	64	55	3070	2882	40	18	25.4	27/30	PN10
3000	$3020 \pm 3.0$	3405	75	200	M 56	68	60	3290	3085	45	18	25.4	27/30	PN10

**Note:** 1. Neck thickness  $t_1$  for underground pipes and fittings.  
2. Neck thickness  $t_2$  for aboveground pipe and fittings.